

N05-A Wabo-Vergunningsaanvraag

Bijlage 2 Plotplan & Zijaanzichten

september '20

ONE-Dyas B.V.

Parnassusweg 815
1082 LZ Amsterdam
The Netherlands



Date: 11 september 2020

Report No.: N05A-1-82-0-15500-02

Issue No.: 1.0

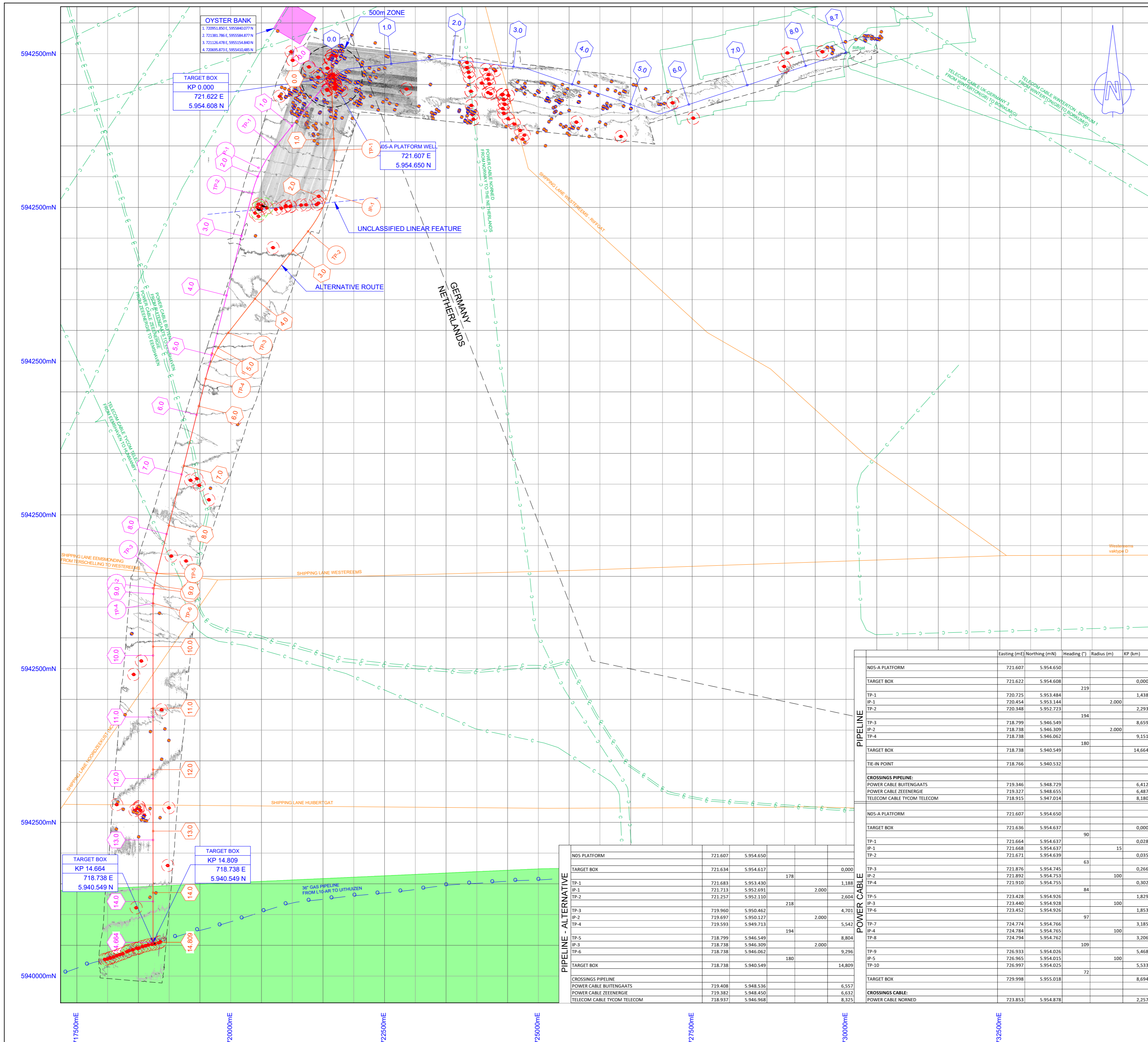
Table of Contents

Table of Contents

- 1 Overall Field Layout
- 2 Platform Plotplans
- 3 Proces Flow Diagrams

1 Overall Field Layout

Pipeline Route - Overall Field Layout



REFERENCES

N05A-7-50-0-72018-01/06 Pipeline alignment sheet - Buried / Unburied option - sheet 01-06
 N05A-7-50-0-72019-01 Approach drawing @ N05A
 N05A-7-10-0-70032-01 Approach drawing @ NGT

GEOxyz
 LU0022H-553_A1_1905_UTM31-ED50_LAT_MB_#0.5
 LU0022H-553_A2_1905_UTM31-ED50_LAT_MB_#0.5 + EXTRA POLYGON
 LU0022H-553_A3_1905_UTM31-ED50_LAT_MB_#0.5 + EXTRA POLYGON
 LU0022H-553_A4_1905_UTM31-ED50_LAT_MB_#0.5
 LU0022H-553_A5_1905_UTM31-ED50_LAT_MB_#0.5

LEGEND

- GENERAL**
- 1.0 KILOMETER MARKER
 - PIPELINE: N05A - NGT
 - CABLE: N05A - RIFFGAT
 - BOUNDARY OF SURVEY AREA
 - EXISTING PIPELINE
 - EXISTING CABLE
 - SHIPPING LANE RIJKSWATERSTAAT
 - ROCKDUMP
 - NATURA2000
 - OYSTERBANK
- BATHYMETRY AND SEABED FEATURES**
- 0.5 CONTOUR LINE AT 1m INTERVAL
 - LvWh SONAR CONTACT
 - LvWh DEPRESSION
 - LvWh MOUND
 - AS-FOUND WELLHEAD
 - CP105 CONE PENETRATION TEST
 - VC05 VIBRE CORE
 - 65mT MAGNETIC ANOMALY
 - WRECK

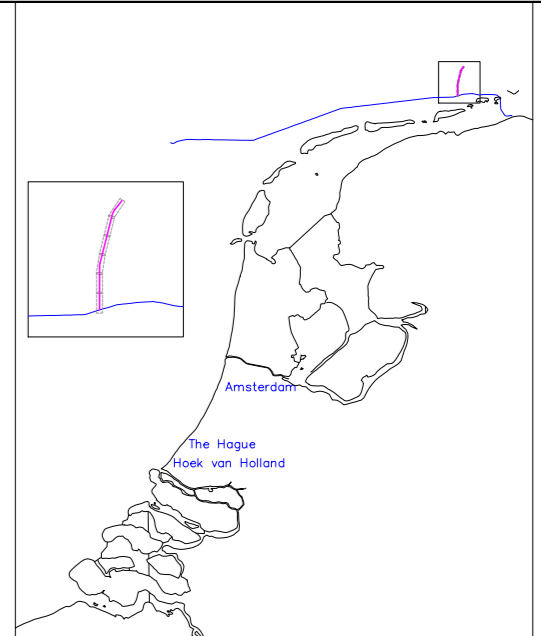
GEODETTIC PARAMETERS

PROJECTED CRS: ED50/UTM zone 31N (EPSG: 23031)

Horizontal Datum Name: European Datum 1950 North Sea -UKCS
 Projection Name: Universal Transverse Mercator

Ellipsoid: International 1924 (Hayford 1909)
 Zone : = North 31
 Central meridian : = 3° East
 Latitude of origin : = Equator
 Semi major axis a = 6 378 388.000
 Semi minor axis b = 6 356 911.946
 Inverse ELLATTening 1/f = 297.000
 Eccentricity squared e = 0.006 722 670
 False Easting : = 500 000.00 m
 False Northing : = 0.00 m
 Scale factor on C.M.: = 0.999 6

WGS84 to ED50 TRANSFORMATION: UKOAA (EPSG: 1311)



KEYPLAN

Rev	Date	Description	Drawn	Eng.	Check	Appr.	Client
06	03-04-2020	ALTERNATIVE PIPELINE ROUTE	Svdv	-	PF	PF	
05	04-02-2020	CLIENT COMMENTS INCORPORATED	Svdv	-	PF	PF	
04	18-12-2019	CLIENT COMMENTS INCORPORATED	Svdv	-	PF	PF	
03	06-12-2019	FOR COMMENTS	Svdv	-	PF	PF	
02	20-11-2019	REROUTING OF PIPELINE & CABLE	Svdv	-	-	-	

enersea
 Jan Evertsenweg 12
 3115 JA Schiedam
 The Netherlands
 +31(0) 103132100
 info@enersea.nl

Client
ONEDyas B.V.
 Project
N05-A TO NGT PIPELINE

Document
Pipeline Route Overall Field Layout



Scale: **1:30000**
 Size: **A1**

Project number: **19018**
 Document Number: **N05A-7-51-0-72510-01**

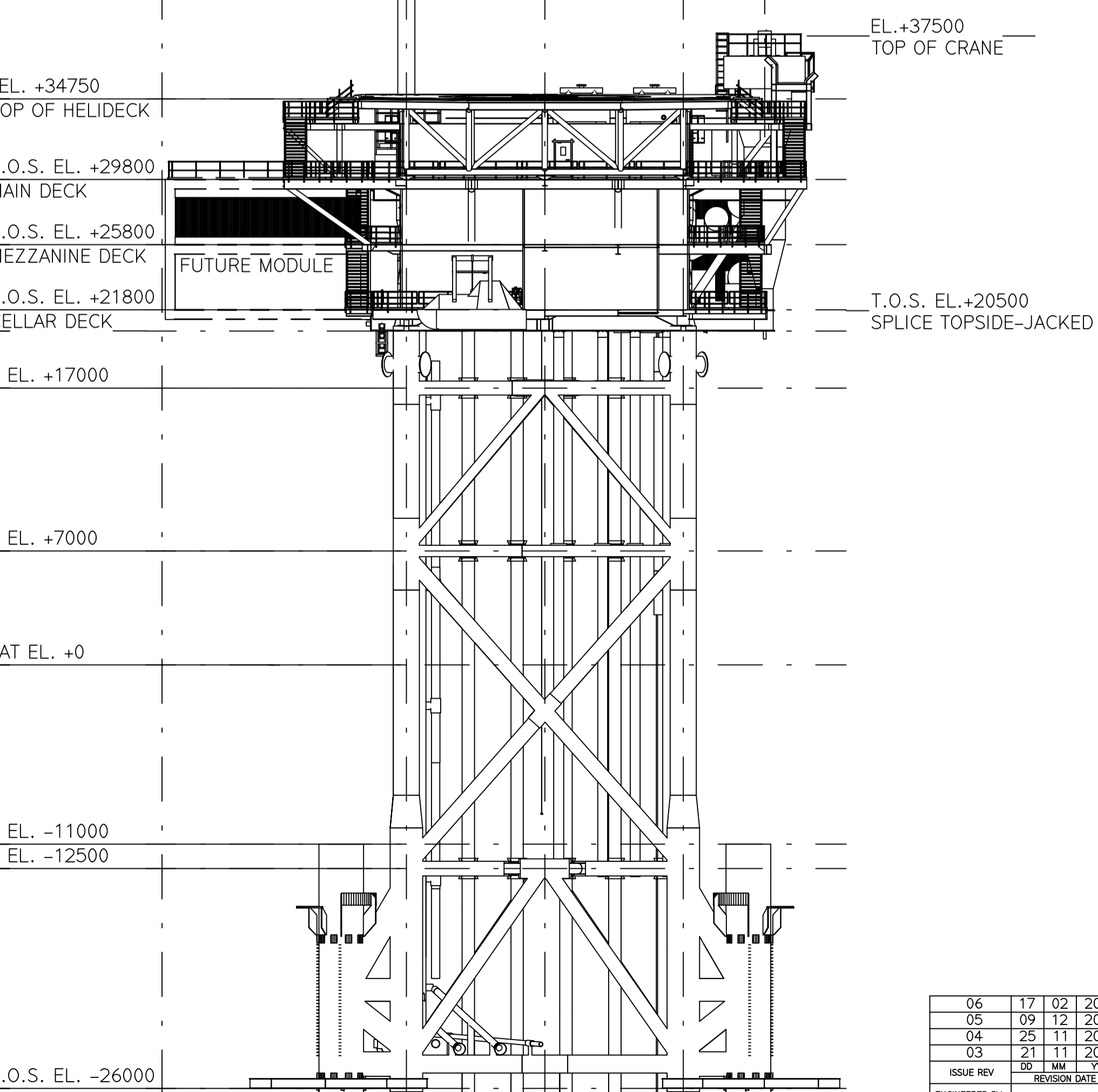
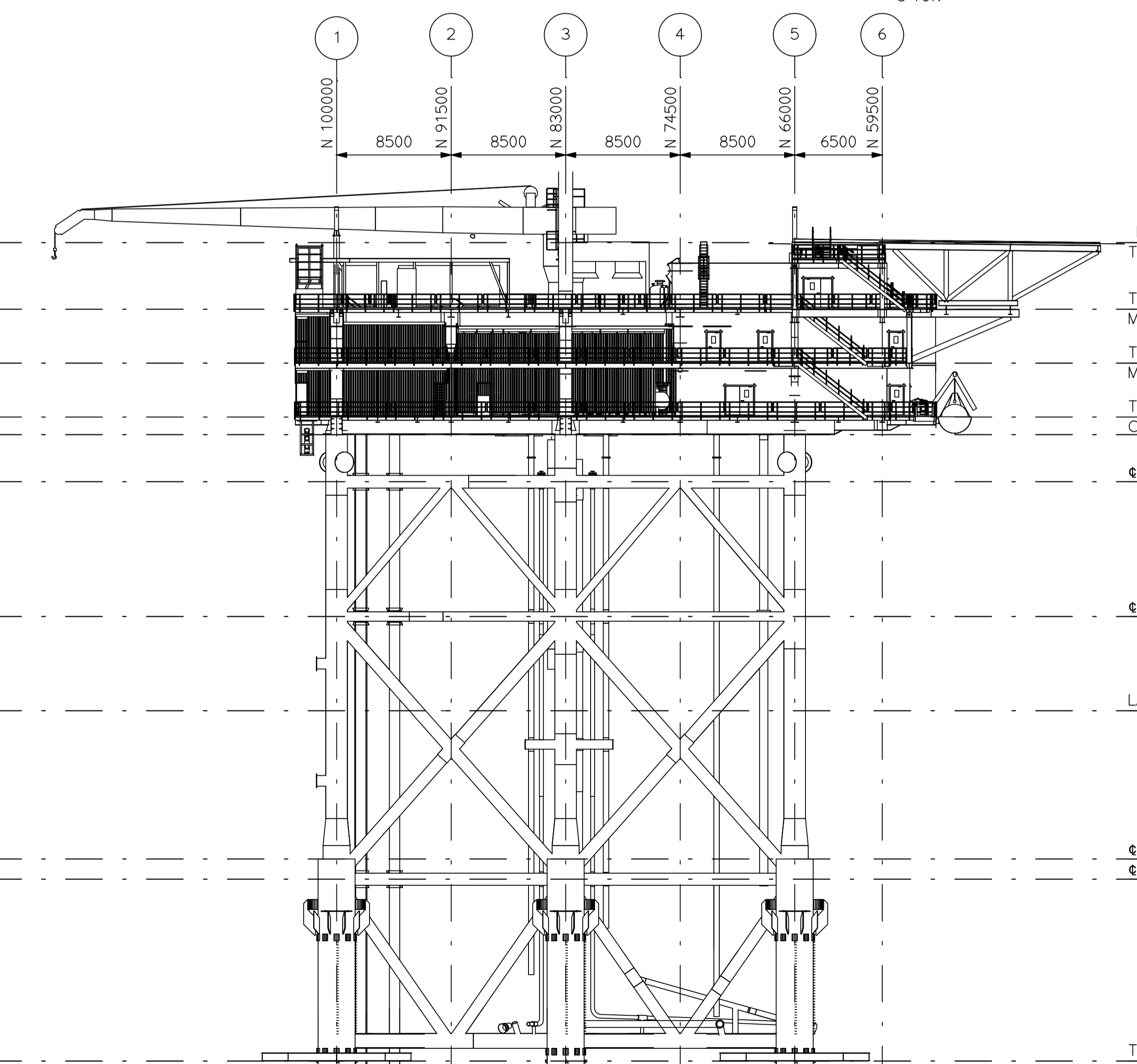
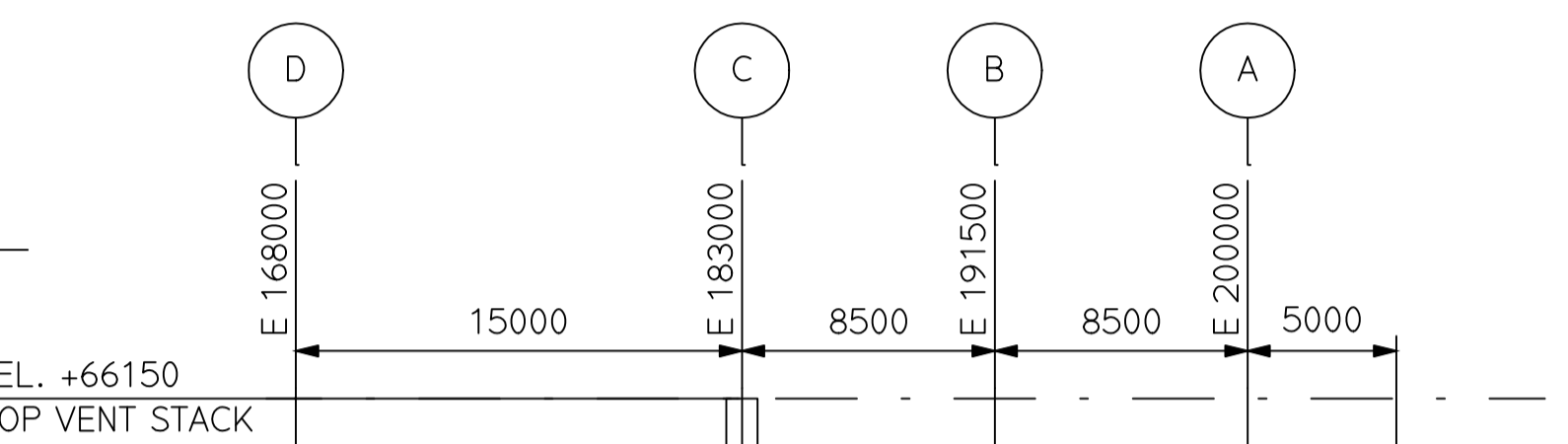
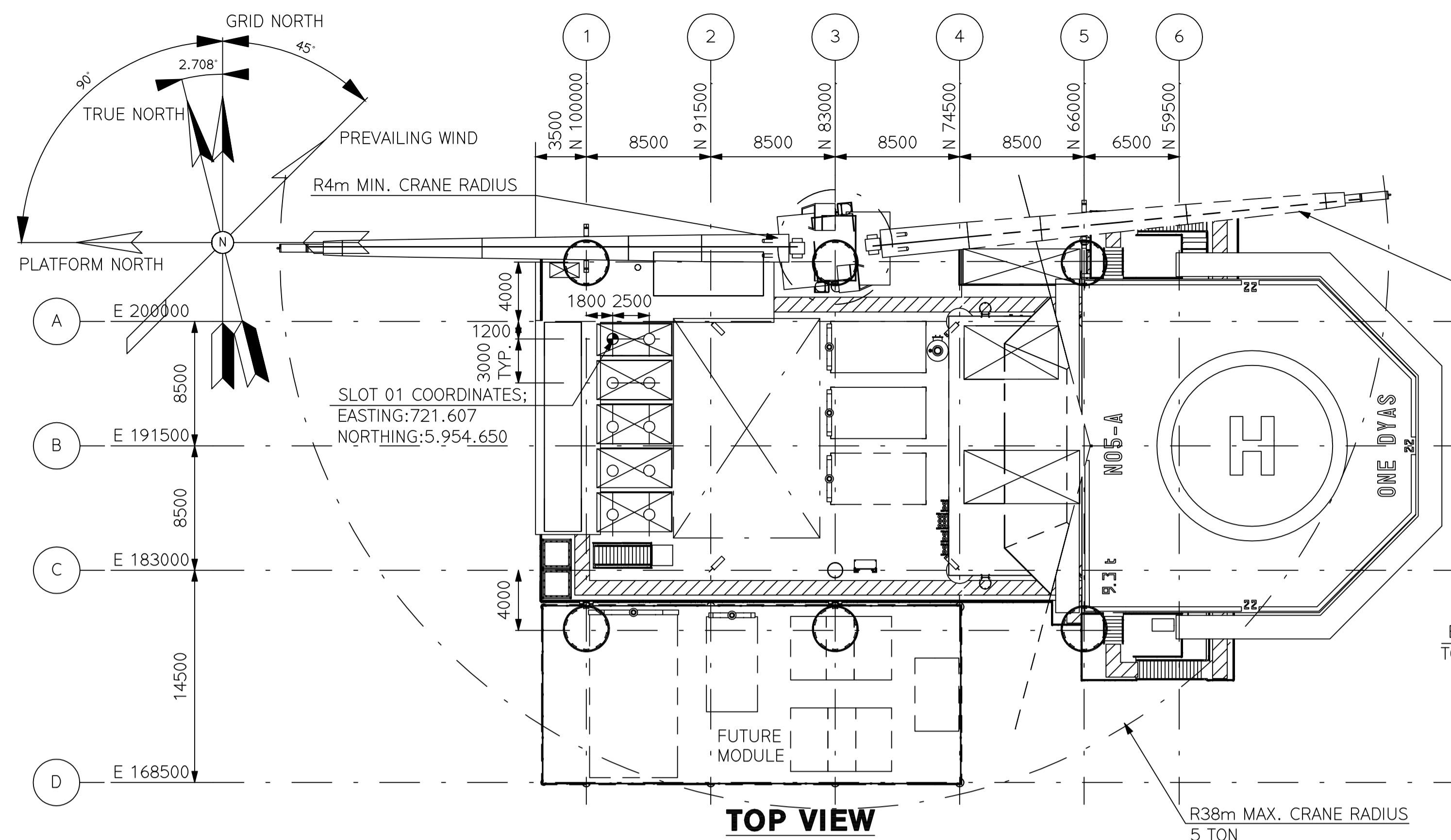
	Eastng (mE)	Northng (mN)	Heading (°)	Radius (m)	KP (km)
NOS-A PLATFORM	721.607	5.954.650			
TARGET BOX	721.622	5.954.608			0,000
TP-1	720.725	5.953.484	219		1,438
IP-1	720.454	5.953.144		2,000	2,293
TP-2	720.348	5.952.723			
TP-3	718.799	5.946.549		194	8,659
IP-2	718.738	5.946.309			2,000
TP-4	718.738	5.946.062			9,151
TARGET BOX	718.738	5.940.549			14,664
TIE-IN POINT	718.766	5.940.532			
CROSSINGS PIPELINE:					
POWER CABLE BUITENGAATS	719.346	5.948.729			6,412
POWER CABLE ZEEENERGIE	719.327	5.948.655			6,487
TELECOM CABLE TYCOM TELECOM	718.915	5.947.014			8,180
NOS-A PLATFORM	721.607	5.954.650			
TARGET BOX	721.636	5.954.637			0,000
TP-1	721.664	5.954.637		90	0,028
IP-1	721.668	5.954.637			15
TP-2	721.671	5.954.639			0,035
TP-3	721.876	5.954.745			0,266
IP-2	721.892	5.954.753			100
TP-4	721.910	5.954.755			0,302
TP-5	723.428	5.954.926			1,829
IP-3	723.440	5.954.928			100
TP-6	723.452	5.954.926			1,853
TP-7	724.774	5.954.766			97
IP-4	724.784	5.954.765			100
TP-8	724.794	5.954.762			3,206
TP-9	726.933	5.954.026			5,468
IP-5	726.965	5.954.015			100
TP-10	726.997	5.954.025			5,533
TARGET BOX	729.998	5.955.018			72
CROSSINGS CABLE:					
POWER CABLE NORRED	723.853	5.954.878			2,257

PIPELINE - ALTERNATIVE

	Eastng (mE)	Northng (mN)	Heading (°)	Radius (m)	KP (km)
NOS PLATFORM	721.607	5.954.650			
TARGET BOX	721.634	5.954.617			0,000
TP-1	721.683	5.953.430		178	1,188
IP-1	721.713	5.952.691			2,000
TP-2	721.257	5.952.110			2,604
TP-3	719.960	5.950.462			218
IP-2	719.697	5.950.127			2,000
TP-4	719.593	5.949.713			5,542
TP-5	718.960	5.950.462			194
IP-3	718.799	5.946.549			8,804
TP-6	718.738	5.946.309			2,000
TP-6	718.738	5.946.062			9,296
TARGET BOX	718.738	5.940.549			14,809
CROSSINGS PIPELINE:					
POWER CABLE BUITENGAATS	719.408	5.948.536			6,557
POWER CABLE ZEEENERGIE	719.382	5.948.450			6,632
TELECOM CABLE TYCOM TELECOM	718.937	5.946.968			8,325

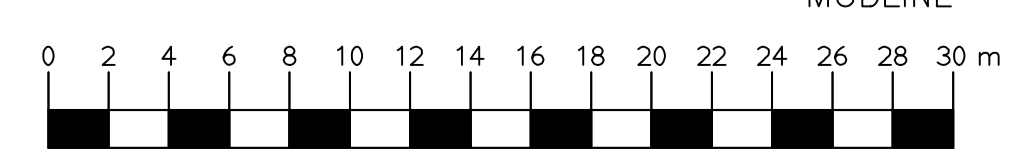
3 Proces Flow Diagrams

Process Flow Diagram - Main Process



LOOKING EAST

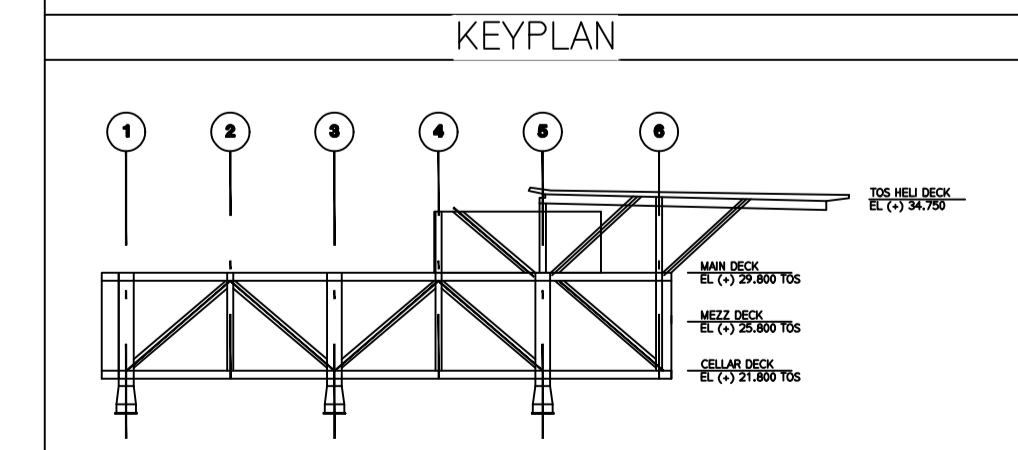
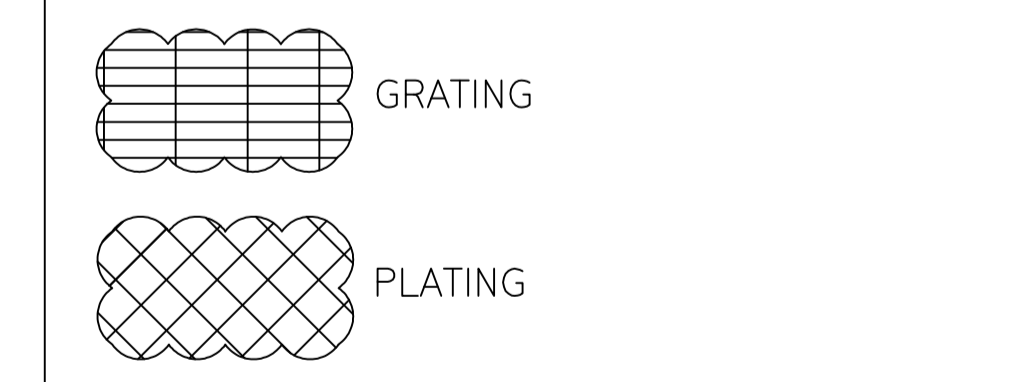
LOOKING NORTH



SCALE 1:250

REFERENCE DRAWINGS	
DWG. NO.	DRAWING TITLE
N05A-4-51-0-42501-01	LOOKING WEST
N05A-4-51-0-42502-01	LOOKING SOUTH
N05A-4-51-0-42502-01	MAIN DECK & HELI DECK
N05A-4-51-0-42503-01	HELI DECK
N05A-4-51-0-42504-01	MAIN DECK
N05A-4-51-0-42505-01	MEZZANINE DECK
N05A-4-51-0-42506-01	CELLAR DECK

HOLDS

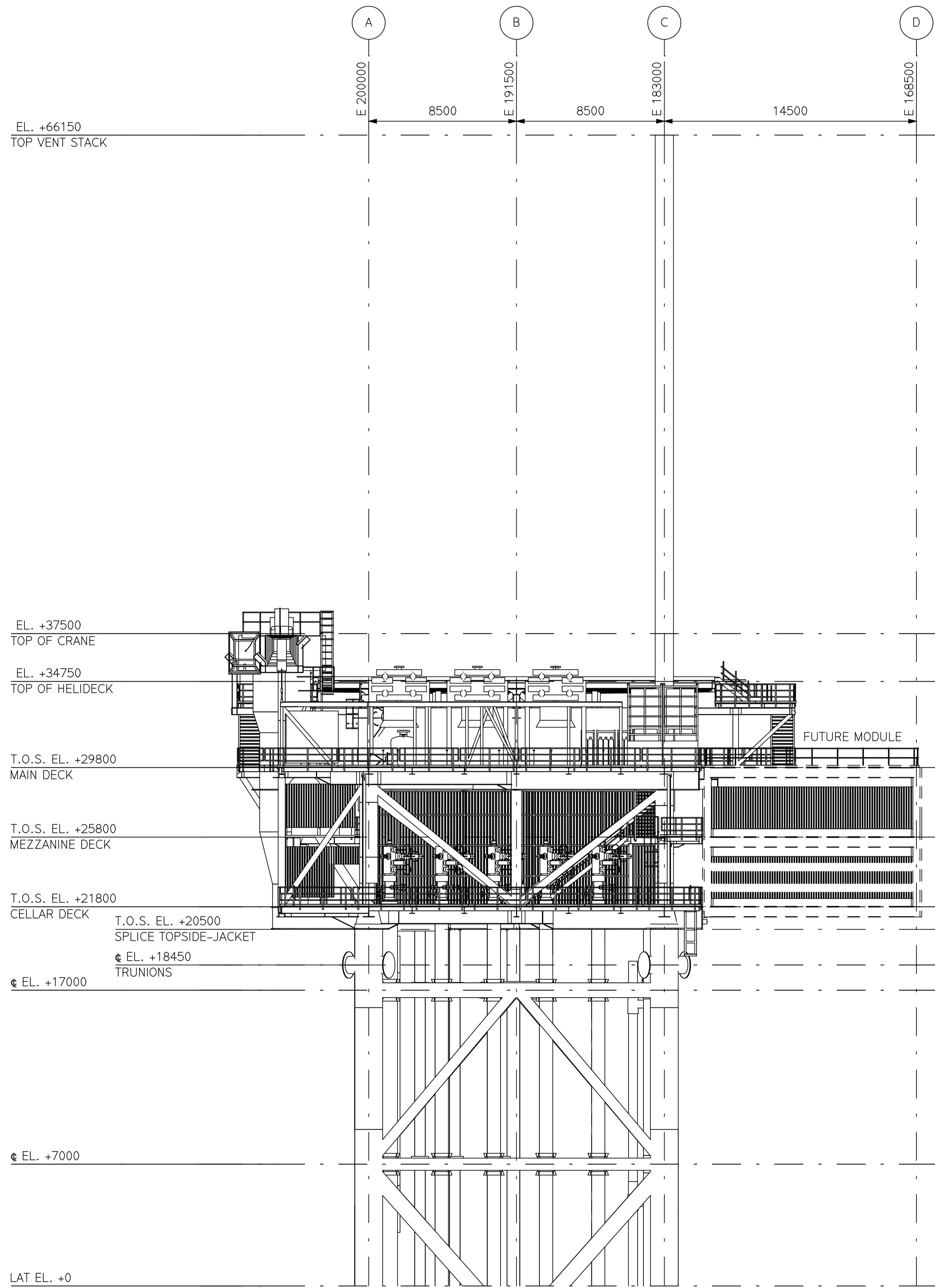


ISSUE REV	DD	MM	YYYY	REVISION DESCRIPTION	DRAWN BY	CHECKED BY	APPROVED BY
06	17	02	2020	FINAL FOR FEED UPDATED	RWA	ABI	SRO
05	09	12	2019	FINAL FOR FEED UPDATED	RWA	ABI	SRO
04	25	11	2019	FINAL FOR FEED UPDATED	RWA	ABI	SRO
03	21	11	2019	FINAL FOR FEED UPDATED	RWA	ABI	SRO



ONE-Dyas B.V.
Amsterdam

ASSETCODE	DISC. CODE	DOC. TYPE CODE	PREFIX	DOCUMENT NUMBER	SHEET NR	REVISION
N05A	4	51	0	42522	01	06

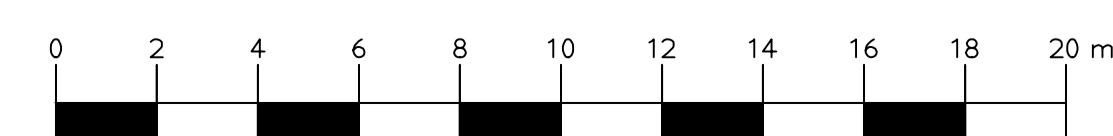


REFERENCE DRAWINGS

DWG. NO.	DRAWING TITLE
N05A-4-51-0-42501-01	LOOKING WEST
N05A-4-51-0-42502-01	MAIN DECK & HELI DECK
N05A-4-51-0-42503-01	HELI DECK
N05A-4-51-0-42504-01	MAIN DECK
N05A-4-51-0-42505-01	MEZZANINE DECK
N05A-4-51-0-42506-01	CELLAR DECK
N05A-4-51-0-42522-01	GENERAL ARRANGEMENT

HOLDS

**SIDE VIEW
LOOKING SOUTH**



SCALE 1:150

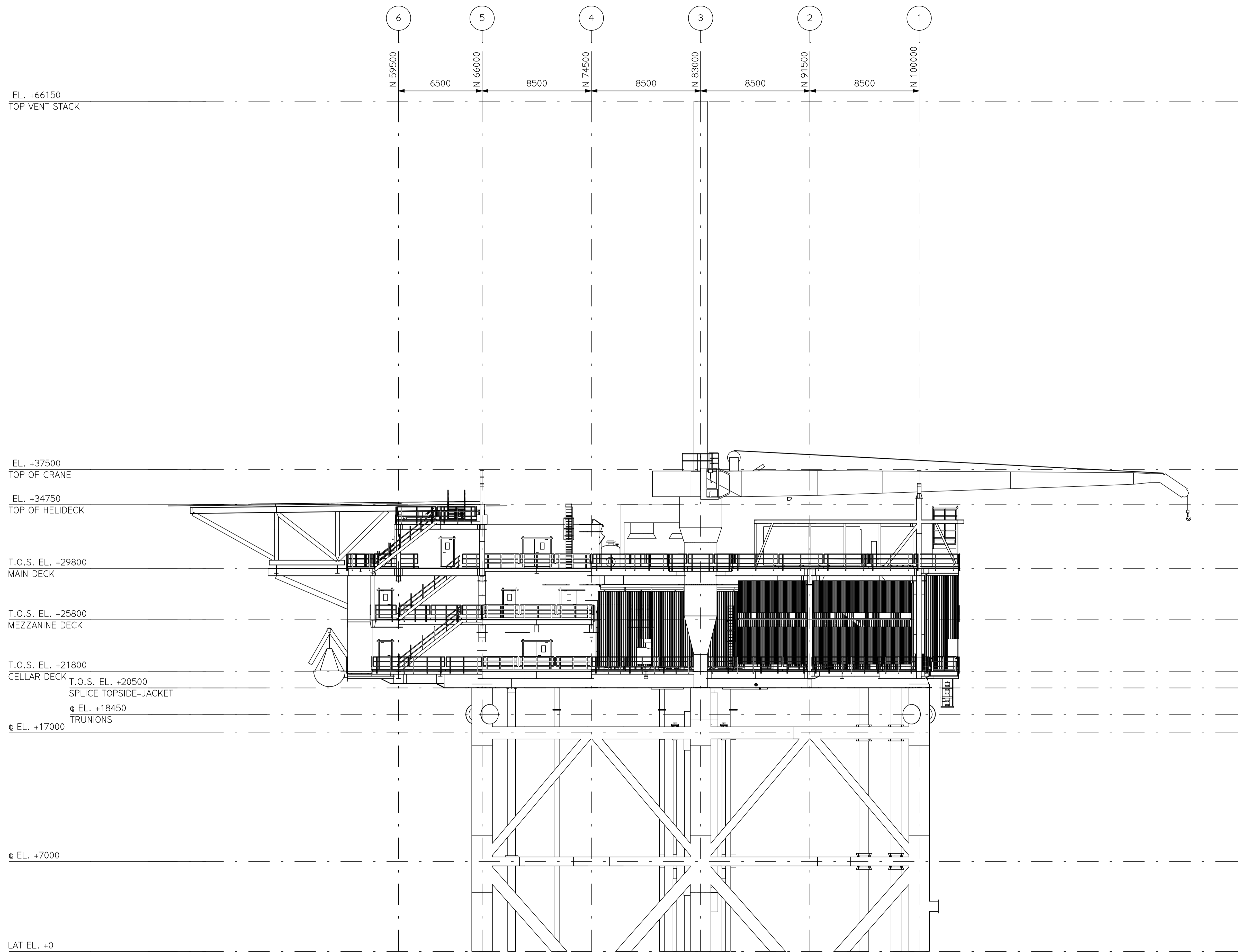
ISSUE	REV	DATE	DESCRIPTION	BY	CHECKED BY	APPROVED BY	
02	09	12	2019	FINAL FOR FEED	RWA	ABJ	SRO
01	01	11	2019	FINAL FOR FEED	RWA	ABJ	SRO

ASSET CODE	DISC. CODE	DOC. TYPE CODE	PREFIX	DOCUMENT NUMBER	SHEET NR	REVISION
N05A	4	51	0	42501	02	02



ONE-DYAS
Amsterdam

ONE-Dyas B.V.
Amsterdam

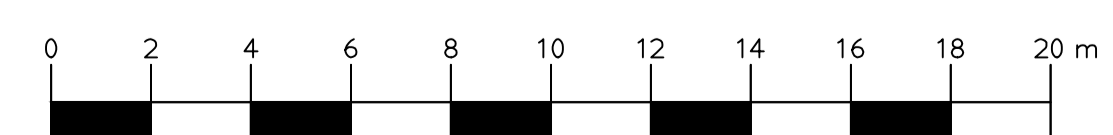


REFERENCE DRAWINGS

DWG. NO.	DRAWING TITLE
N05A-4-51-0-42501-02	LOOKING SOUTH
N05A-4-51-0-42502-01	MAIN DECK & HELI DECK
N05A-4-51-0-42503-01	HELI DECK
N05A-4-51-0-42504-01	MAIN DECK
N05A-4-51-0-42505-01	MEZZANINE DECK
N05A-4-51-0-42506-01	CELLAR DECK
N05A-4-51-0-42522-01	GENERAL ARRANGEMENT

HOLDS

**SIDE VIEW
LOOKING WEST**



SCALE 1:150

ISSUE	REV	DD	MM	YYYY	REVISION DESCRIPTION	SCALE 1:	150	PAPER SIZE
02	06	12	2019		FINAL FOR FEED			
01	01	11	2019		FINAL FOR FEED			

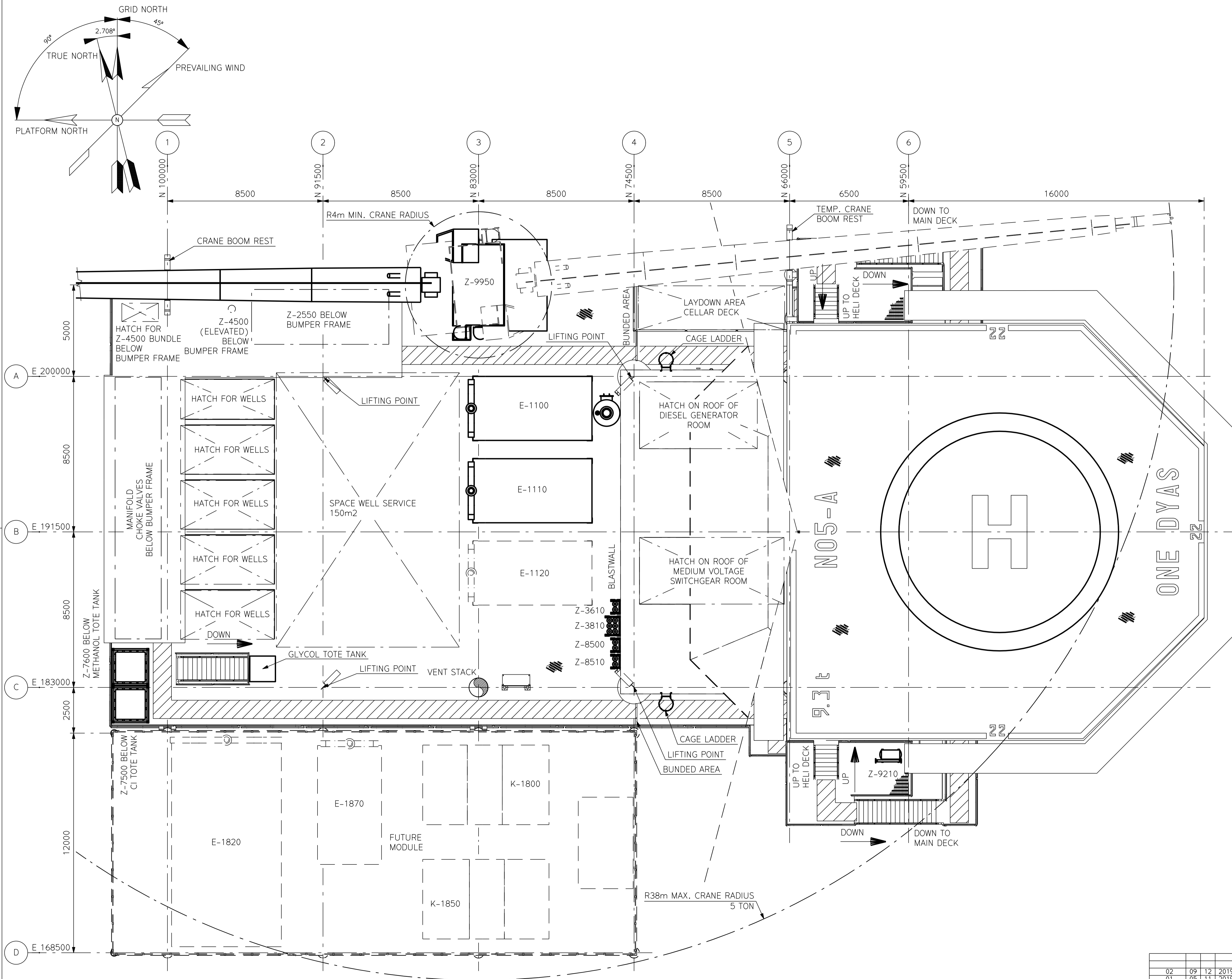
ENGINEERED BY:	SCALE 1:	150	PAPER SIZE

ASSETCODE	DOC.CDE	DOC.TYPE CDE	PREFIX	DOCUMENT NUMBER	SHEET NR	REVISION
N05A	4	51	0	42501	01	02

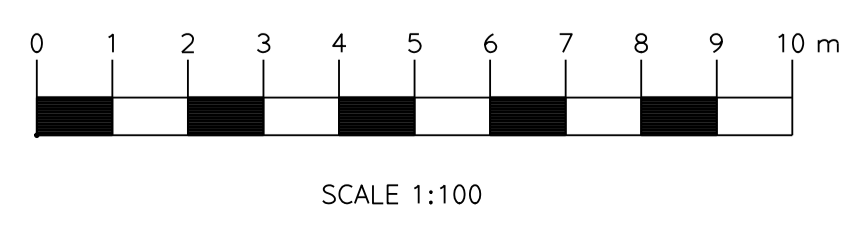


ONE-Dyas B.V.
Amsterdam

PLOT PLAN
SIDE VIEW
LOOKING WEST



**TOP VIEW
MAIN DECK & HELI DECK**

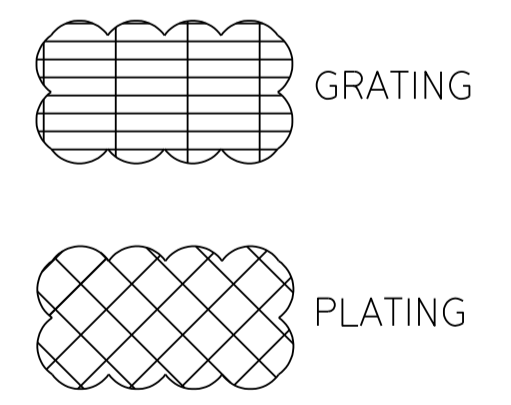


LEGEND

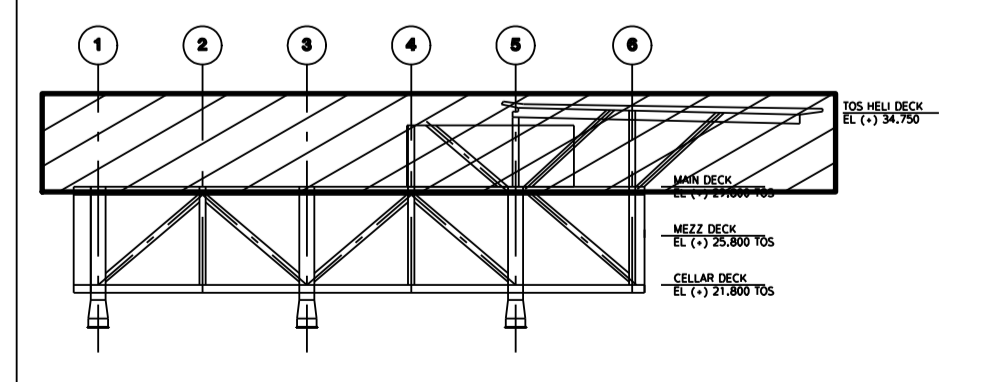
DWG. NO.	DRAWING TITLE
N05A-4-51-0-42501-01	LOOKING WEST
N05A-4-51-0-42501-02	LOOKING SOUTH
N05A-4-51-0-42503-01	HELI DECK
N05A-4-51-0-42504-01	MAIN DECK
N05A-4-51-0-42505-01	MEZZANINE DECK
N05A-4-51-0-42506-01	CELLAR DECK
N05A-4-51-0-42522-01	GENERAL ARRANGEMENT
N05A-4-51-0-52510-01	ELECTRICAL ROOM LAYOUT MAIN DECK

REFERENCE DRAWINGS

DWG. NO.	DRAWING TITLE
N05A-4-51-0-42501-01	LOOKING WEST
N05A-4-51-0-42501-02	LOOKING SOUTH
N05A-4-51-0-42503-01	HELI DECK
N05A-4-51-0-42504-01	MAIN DECK
N05A-4-51-0-42505-01	MEZZANINE DECK
N05A-4-51-0-42506-01	CELLAR DECK
N05A-4-51-0-42522-01	GENERAL ARRANGEMENT
N05A-4-51-0-52510-01	ELECTRICAL ROOM LAYOUT MAIN DECK



KEYPLAN

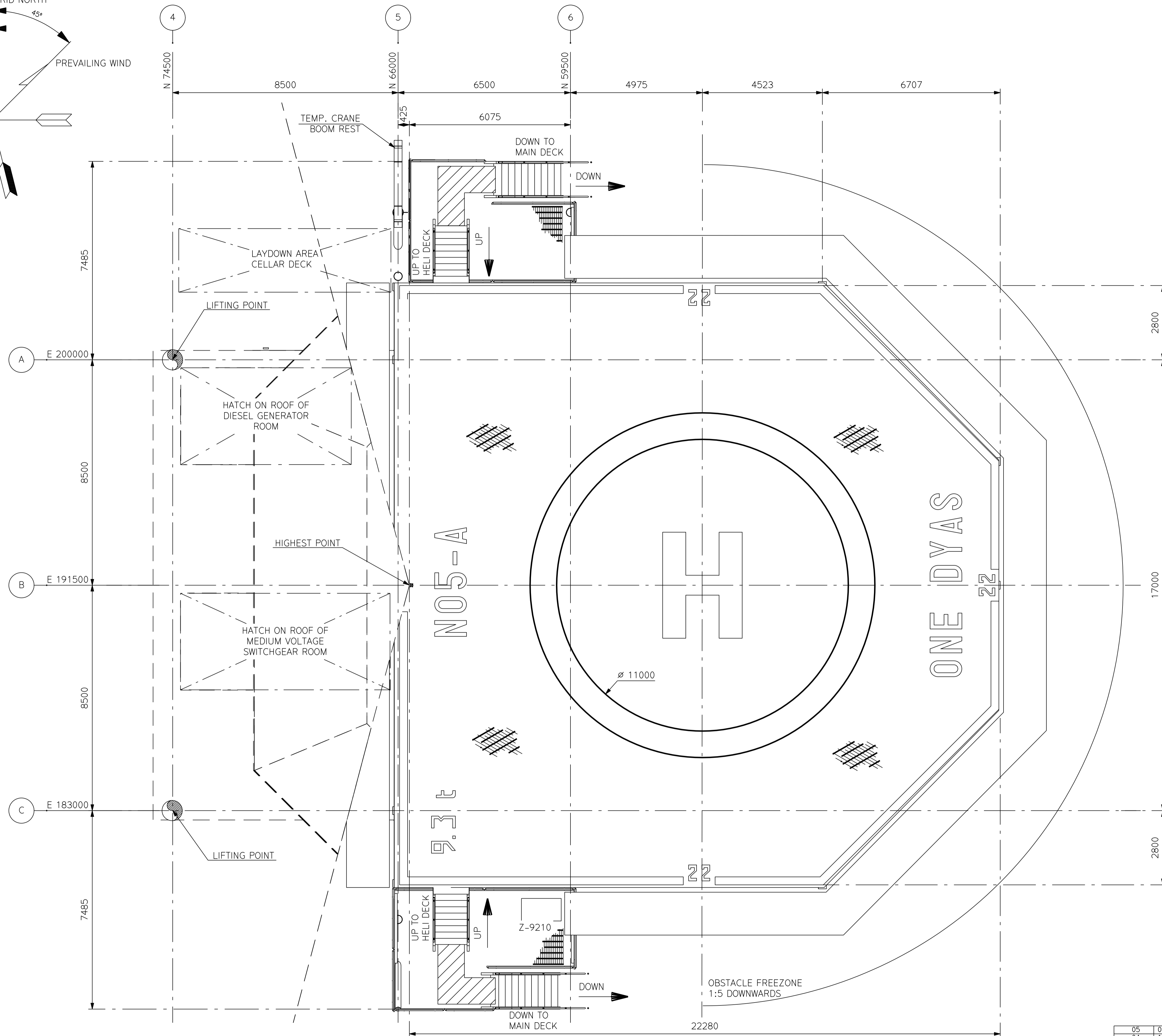
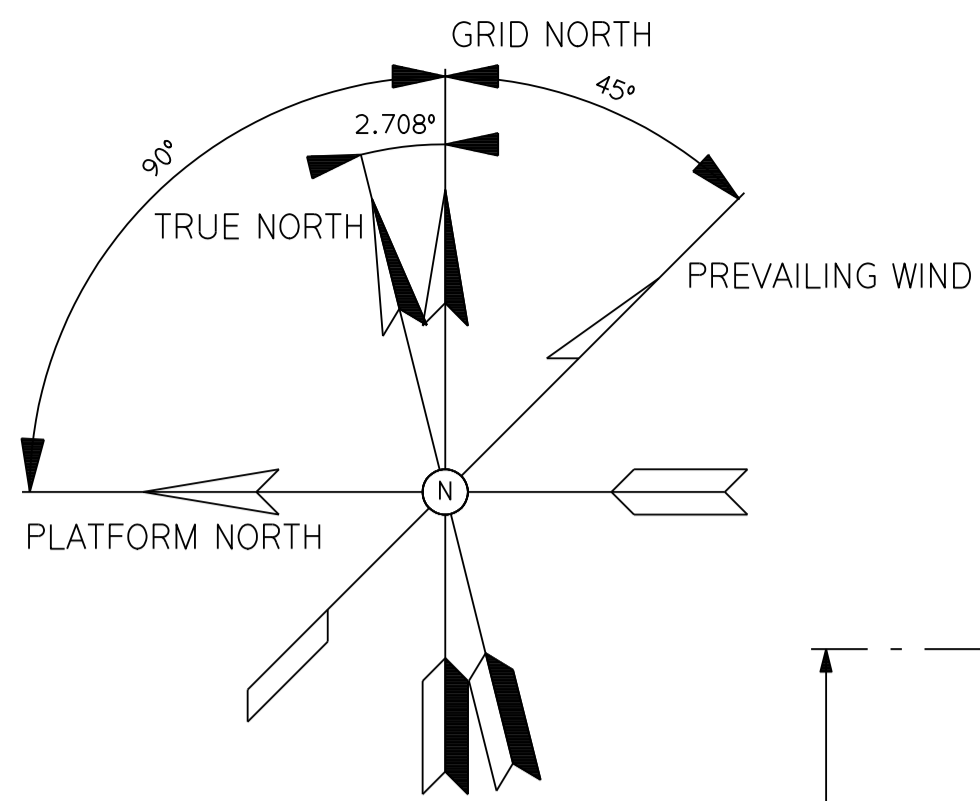


ISSUE REV	DD	MM	YYYY	REVISION DESCRIPTION	DRAWN BY	CHECKED BY	APPROVED BY
02	09	12	2019	FINAL FOR FEED	RWA	ABI	SRO
01	05	11	2019	FINAL FOR FEED	RWA	ABI	SRO

ASSETCODE	DISC.CDE	DOC.TYPE.CDE	PREFIX	DOCUMENT NUMBER	SHEET NR	REVISION
N05A	4	51	0	42502	01	02



ONE-Dyas B.V.
Amsterdam



NOTES

EQUIPMENT LIST

EQUIPMENT NUMBER	DESCRIPTION
Z-9210	HELIDECK DELUGE SYSTEM

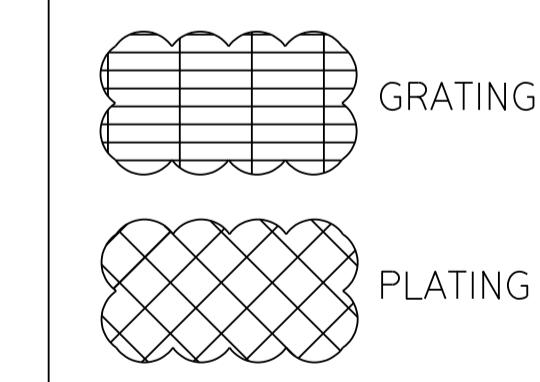
ROOM MATRIX

ROOM	DESCRIPTION

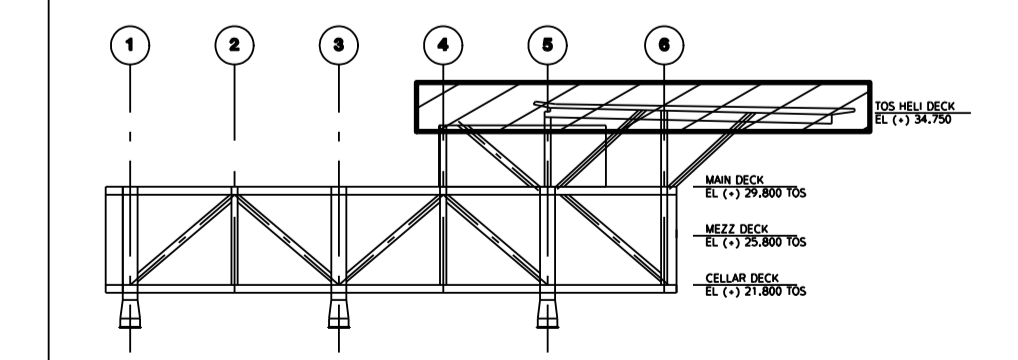
REFERENCE DRAWINGS

DWG. NO.	DRAWING TITLE
N05A-4-51-0-42501-01	LOOKING WEST
N05A-4-51-0-42501-02	LOOKING SOUTH
N05A-4-51-0-42502-01	MAIN DECK & HELI DECK
N05A-4-51-0-42504-01	MAIN DECK
N05A-4-51-0-42505-01	MEZZANINE DECK
N05A-4-51-0-42506-01	CELLAR DECK
N05A-4-51-0-42522-01	GENERAL ARRANGEMENT

HOLDS

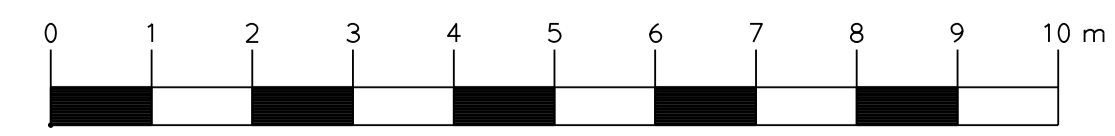


KEYPLAN



ISSUE NO.	REV	DATE	DESCRIPTION	DRAWN BY	CHECKED BY	APPROVED BY	
05	09	12	2019	FINAL FOR FEED	RWA	ABI	SRO
04	16	10	2019	FINAL FOR FEED	RWA	ABI	SRO
03	07	10	2019	FINAL CONCEPT	RWA	ABI	MST
02	26	09	2019	CONCEPT UPDATE	RWA	ABI	MST

HELIDECK
T.O.S. EL. +34750

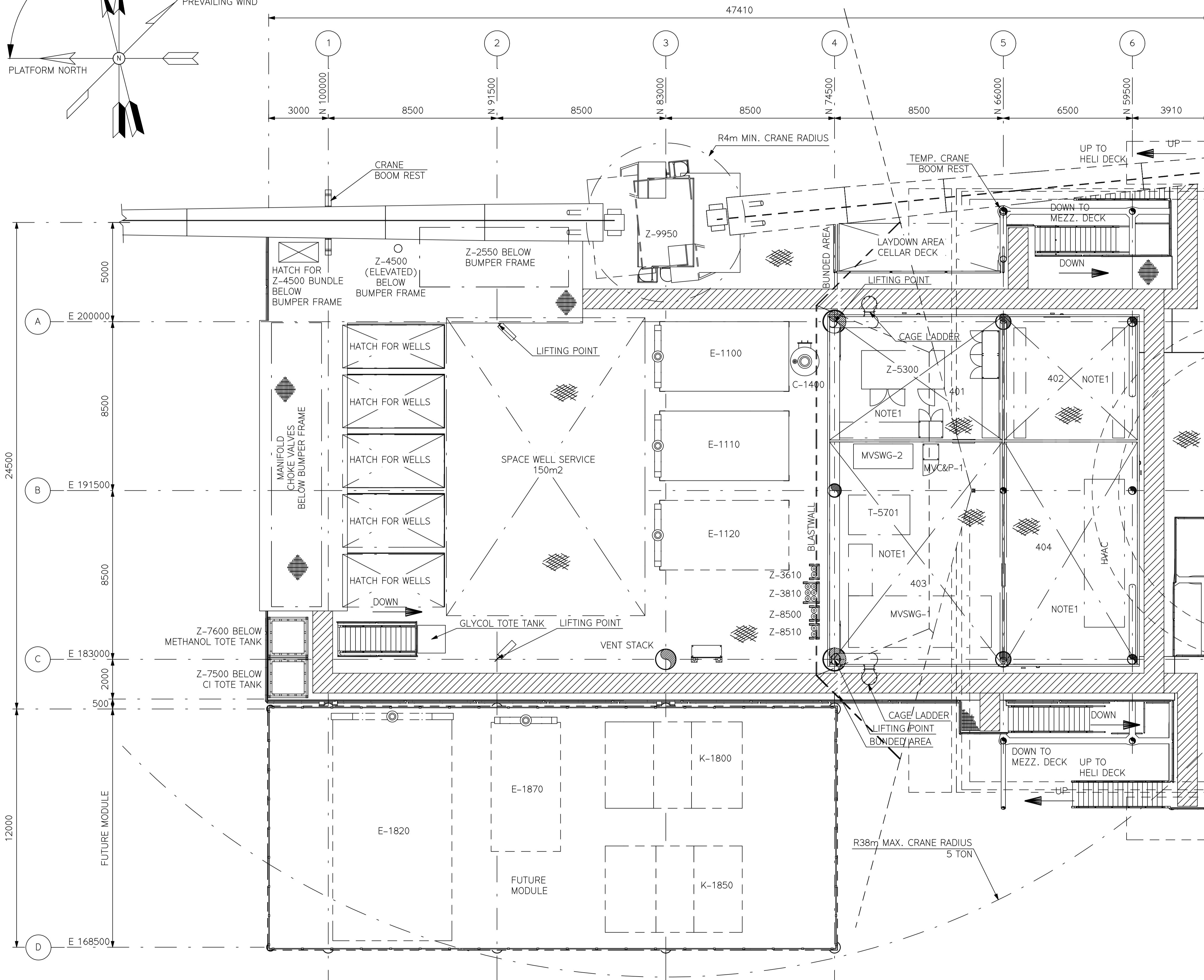
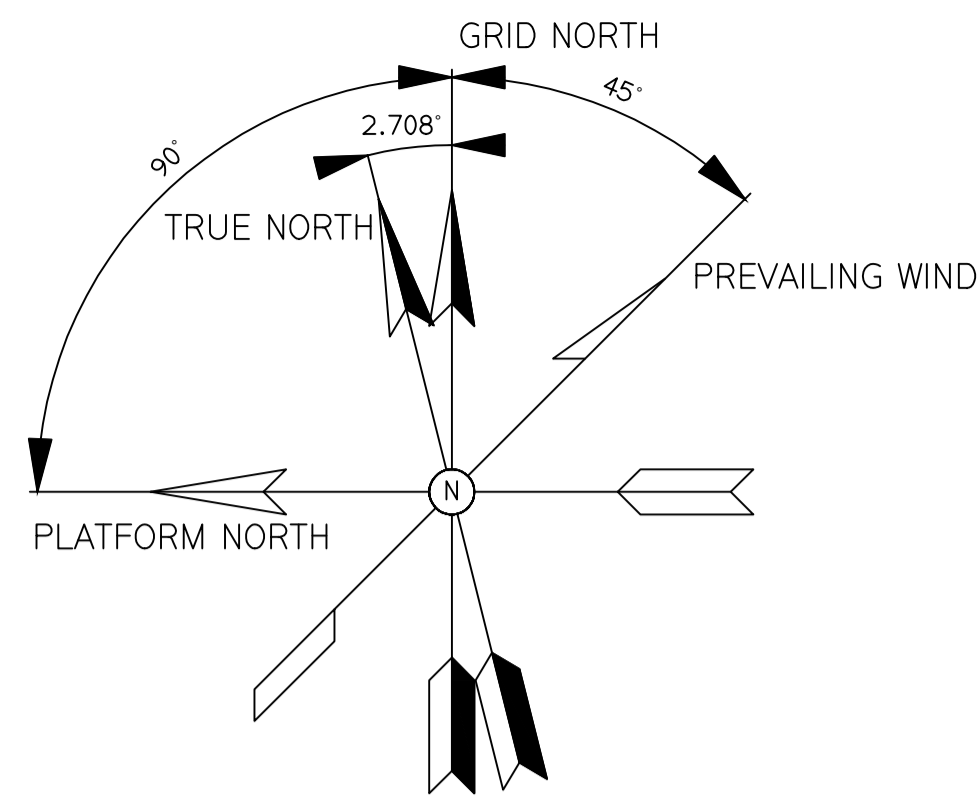


SCALE 1:75



ONE-Dyas B.V.
Amsterdam

ASSET CODE	DISC. CODE	DOC. TYPE CODE	PREFIX	DOCUMENT NUMBER	SHEET NR	REVISION
N05A	4	51	0	42503	01	05

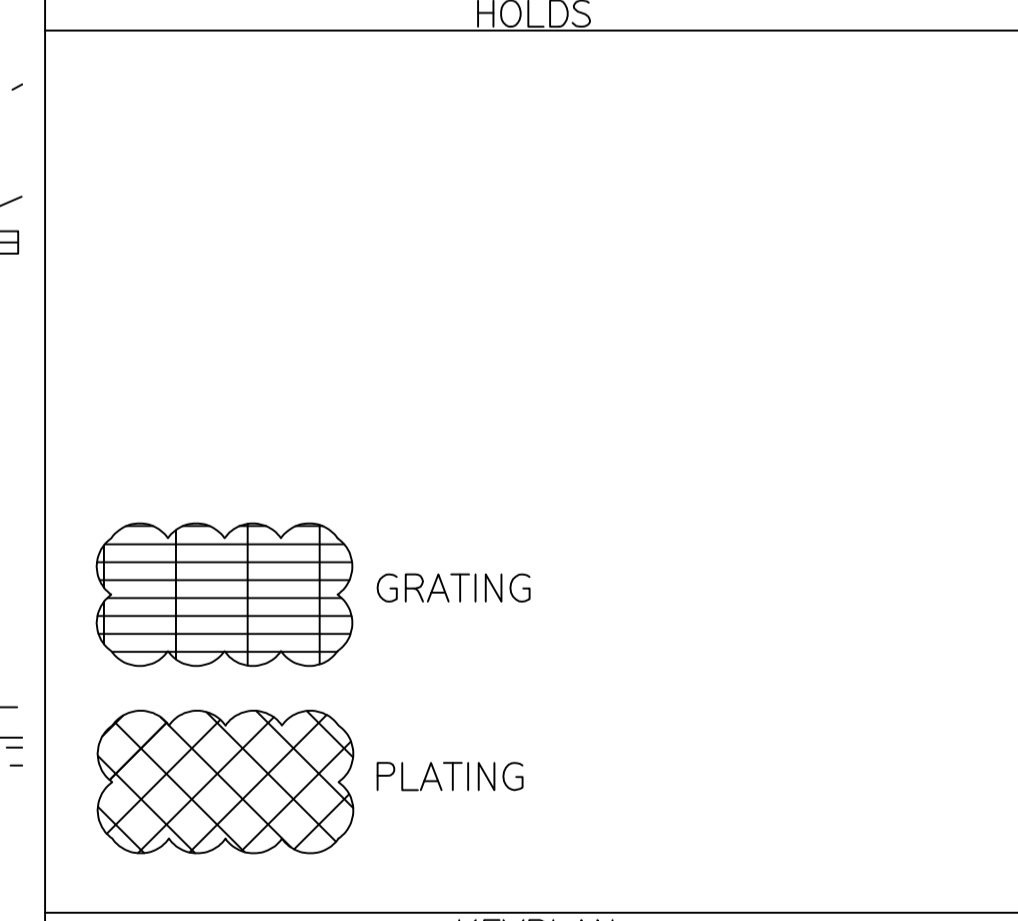


NOTES
1. EQUIPMENTS ARE LOCATED IN ROOMS.

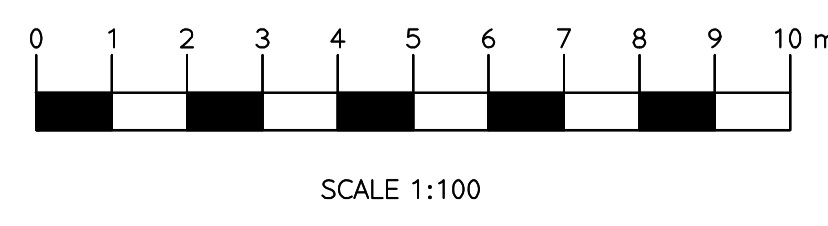
EQUIPMENT LIST	
EQUIPMENT NUMBER	DESCRIPTION
C-1400	GLYCOL CONTACTOR
E-1100	GAS COOLER
E-1110	GAS COOLER
E-1120	GAS AIR COOLER (FUTURE)
E-1820	DISCHARGE COOLER (HP) (FUTURE)
E-1870	DISCHARGE COOLER (HP) (FUTURE)
K-1800	COMPRESSION TRAIN 1 (FUTURE)
K-1850	COMPRESSION TRAIN 2 (FUTURE)
MVC&P-1	CONTROL & PROTECTION PANEL
MVSWG-1	MEDIUM VOLTAGE SWITCH GEAR
MVSWG-2	RING MAIN UNIT
T-5701	33/0.4 kV, 2MVA DRY TYPE TRANSFORMER
T-5702	33/6.6 kV, 630kVA DRY TYPE TRANSFORMER (FUTURE)
Z-2550	FLASH GAS RE-COMPRESSION PACKAGE
Z-3610	VENT SNUFFING PACKAGE
Z-3810	VENT SNUFFING PACKAGE
Z-4500	GLYCOL REGENERATION PACKAGE
Z-5300	EMERGENCY DIESEL GENERATOR
Z-7500	CORROSION INHIBITOR INJECTION PACKAGE
Z-7600	METHANOL INJECTION PACKAGE
Z-8500	N2 SYSTEM
Z-8510	N2 SYSTEM
Z-9950	CRANE MAIN PLATFORM

ROOM MATRIX	
ROOM	DESCRIPTION
401	DIESEL GENERATOR ROOM
402	BATTERY ROOM
403	MEDIUM VOLTAGE SWITCHGEAR ROOM
404	HVAC ROOM

REFERENCE DRAWINGS	
DWG. NO.	DRAWING TITLE
N05A-4-51-0-42501-01	LOOKING WEST
N05A-4-51-0-42501-02	LOOKING SOUTH
N05A-4-51-0-42502-01	MAIN DECK & HELI DECK
N05A-4-51-0-42503-01	HELI DECK
N05A-4-51-0-42505-01	MEZZANINE DECK
N05A-4-51-0-42506-01	CELLAR DECK
N05A-4-51-0-42522-01	GENERAL ARRANGEMENT
N05A-4-51-0-52510-01	ELECTRICAL ROOM LAYOUT MAIN DECK



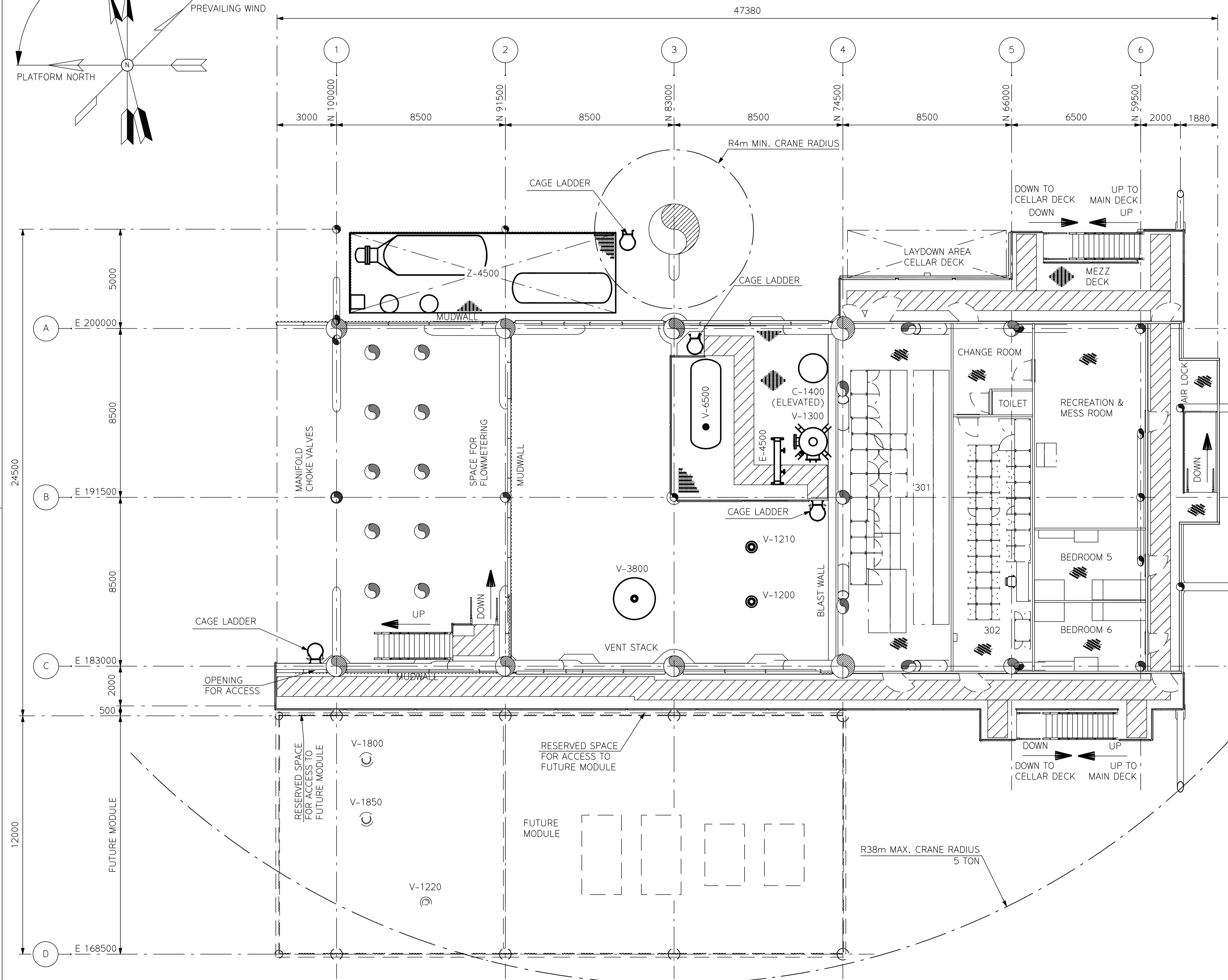
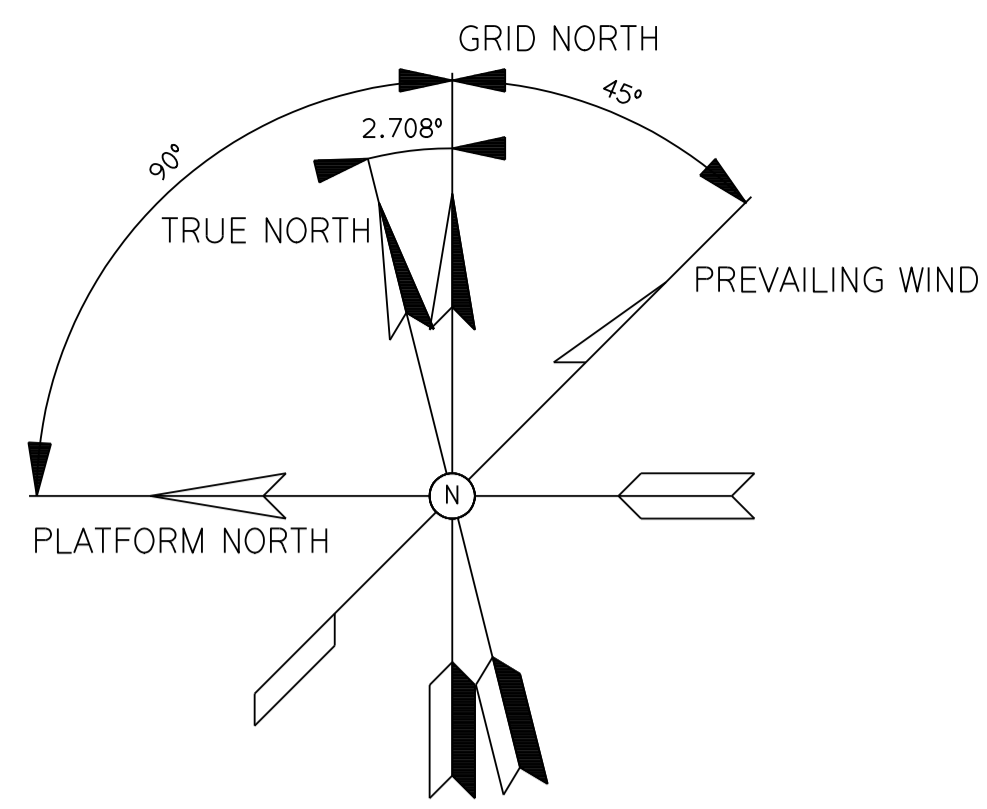
MAIN DECK
T.O.S. EL. +29800



ISSUE REV	DD	MM	YYYY	REVISION DESCRIPTION	DRAWN BY	CHECKED BY	APPROVED BY
05	09	12	2019	FINAL FOR FEED	RWA	ABI	SRO
04	16	10	2019	FINAL FOR FEED	RWA	ABI	SRO
03	07	10	2019	FINAL CONCEPT	RWA	ABI	MST
02	26	09	2019	CONCEPT UPDATE	RWA	ABI	MST

ENGINEERED BY:	REVISION DATE:	SCALE 1:	100	PAPER SIZE:		
<small>This document is confidential. The copyright is vested in ONE-Dyas B.V., Amsterdam, the Netherlands. All rights reserved. Neither the whole nor any part of this document may be disclosed to any third party or reproduced, stored in any retrieval system or transmitted in any form or by any means (electronic, mechanical, reprographic, recording or otherwise) without the prior written consent of the copyright owner, 2019.</small>		ONE-Dyas B.V. Amsterdam				
ASSETCODE	DISC.CDE	DOC.TYPE.CDE	PREFIX	DOCUMENT NUMBER	SHEET	REVISION
N05A	4	51	0	42504	01	05





NOTES

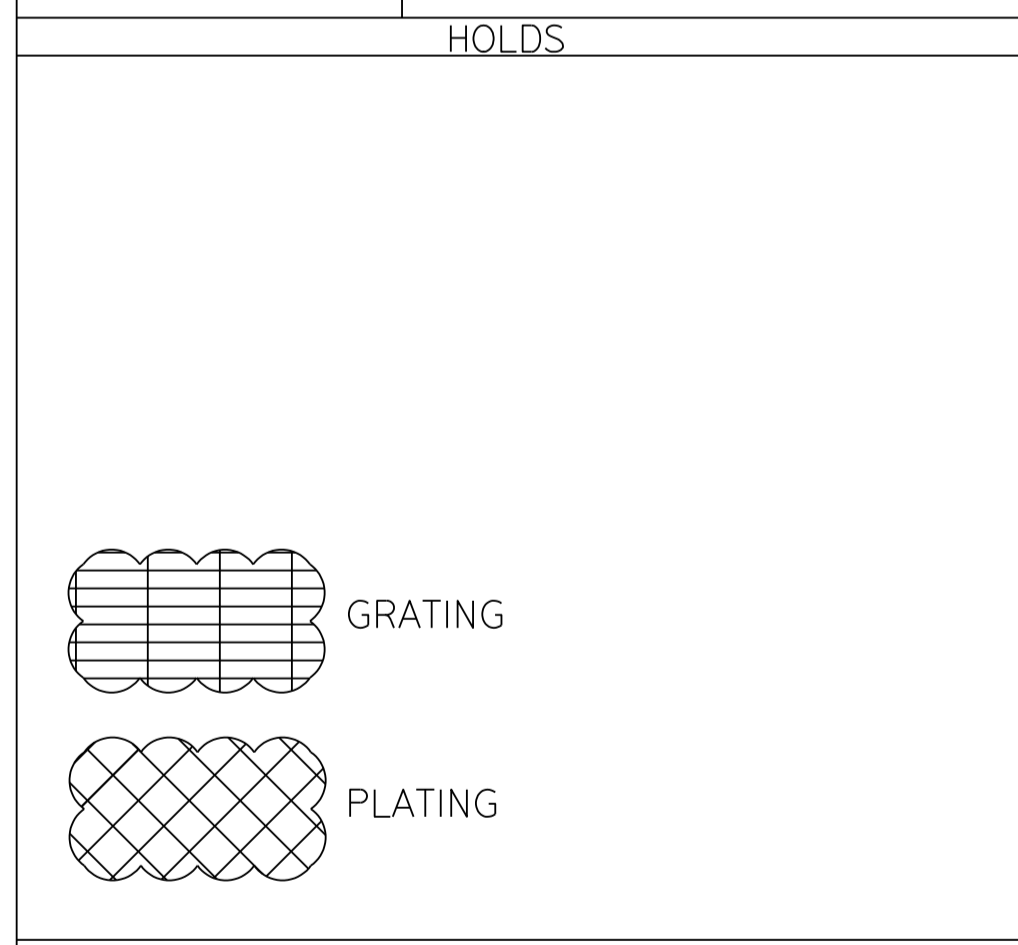
EQUIPMENT LIST	
EQUIPMENT NUMBER	DESCRIPTION
C-1400	GLYCOL CONTACTOR
E-4500	GLYCOL-GAS HEAT EXCHANGER
V-1200	PRODUCTION SEPARATOR
V-1210	PRODUCTION SEPARATOR
V-1220	PRODUCTION SEPARATOR (FUTURE)
V-1300	INLET SCRUBBER
V-1800	SUCTION SCRUBBER (FUTURE)
V-1850	SUCTION SCRUBBER (FUTURE)
V-3800	VENT KNOCK OUT DRUM
V-6500	CLOSED DRAIN VESSEL
Z-4500	GLYCOL REGENERATION PACKAGE

ROOM MATRIX

ROOM	DESCRIPTION
301	MCC ROOM
302	INSTRUMENT ROOM

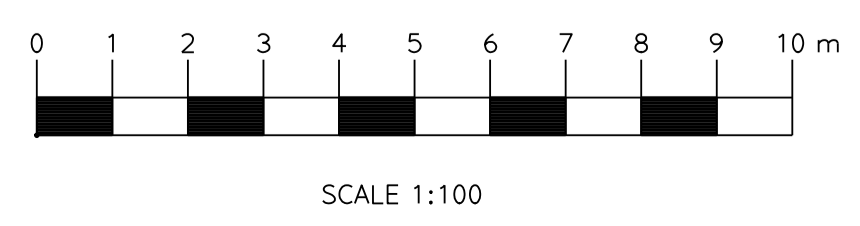
REFERENCE DRAWINGS

DWG. NO.	DRAWING TITLE
N05A-4-51-0-42501-01	LOOKING WEST
N05A-4-51-0-42501-02	LOOKING SOUTH
N05A-4-51-0-42502-01	MAIN DECK & HELI DECK
N05A-4-51-0-42503-01	HELI DECK
N05A-4-51-0-42504-01	MAIN DECK
N05A-4-51-0-42506-01	CELLAR DECK
N05A-4-51-0-42522-01	GENERAL ARRANGEMENT
N05A-4-51-0-52510-02	E&I ROOM LAYOUT MEZZANINE DECK

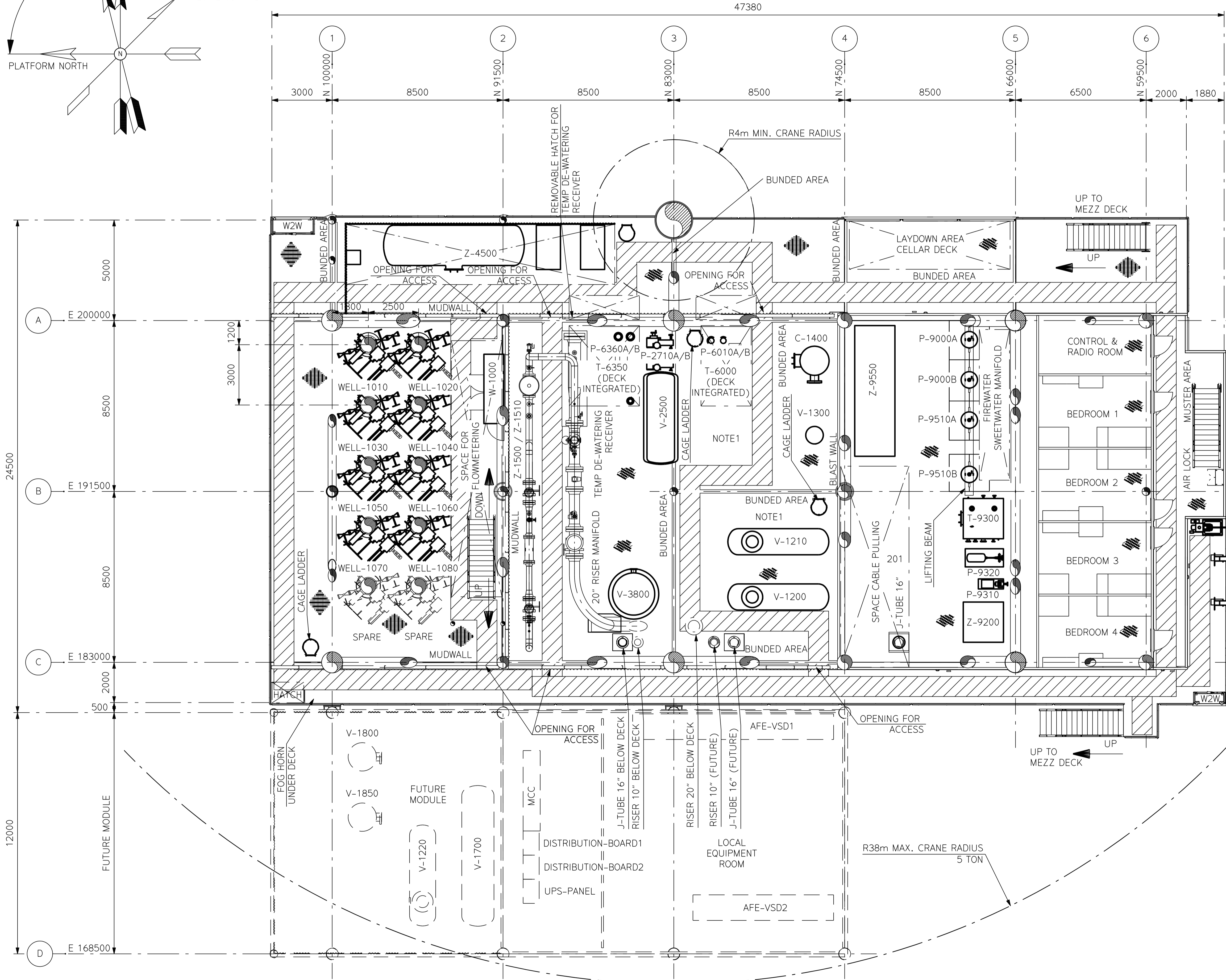
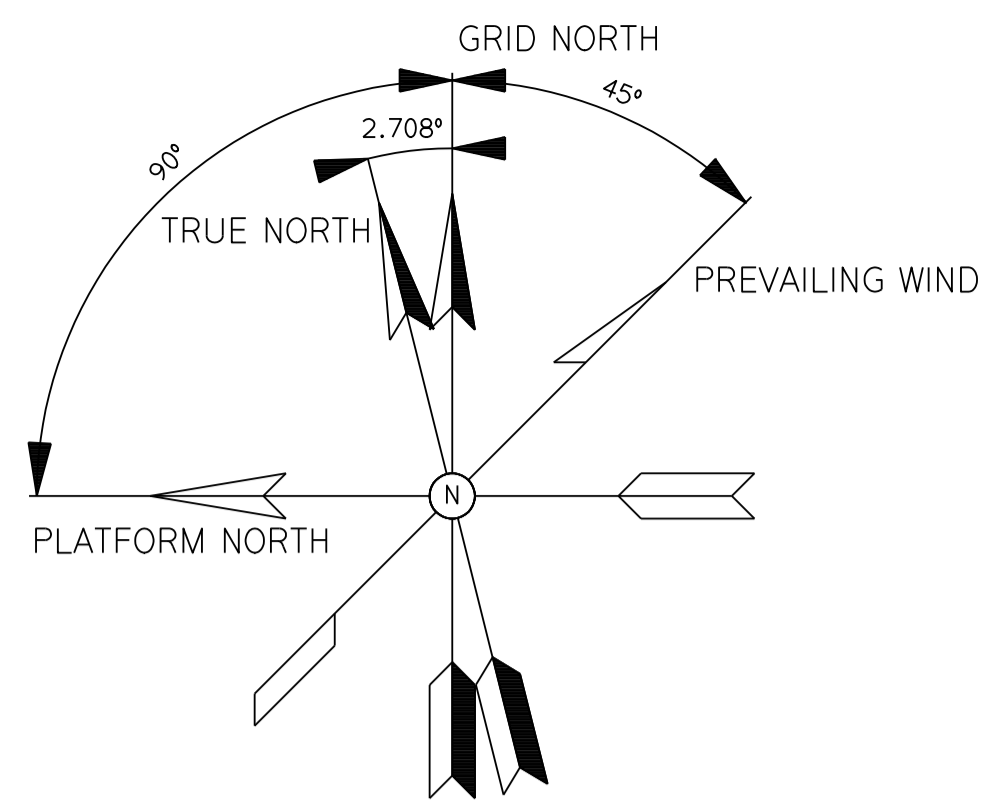


ISSUE REV	DD	MM	YYYY	REVISION DESCRIPTION	DRAWN BY	CHECKED BY	APPROVED BY
05	09	12	2019	FINAL FOR FEED	RWA	ABI	SRO
04	16	10	2019	FINAL FOR FEED	RWA	ABI	SRO
03	07	10	2019	FINAL CONCEPT	RWA	ABI	MST
02	26	09	2019	CONCEPT UPDATE	RWA	ABI	MST

MEZZANINE DECK
T.O.S. EL. +25800



ENGINEERED BY:	SCALE 1:	100	PAPER SIZE:			
<small>This document is confidential. The copyright is vested in ONE-Dyas B.V., Amsterdam, the Netherlands. All rights reserved. Neither the whole nor any part of this document may be disclosed to any third party or reproduced, stored in any retrieval system or transmitted in any form or by any means (electronic, mechanical, reprographic, recording or otherwise) without the prior written consent of the copyright owner, 2019.</small>						
ASSET CODE	DISC. CODE	DOC. TYPE CODE	PREFIX	DOCUMENT NUMBER	SHEET NR	REVISION
N05A	4	51	0	42505	01	05



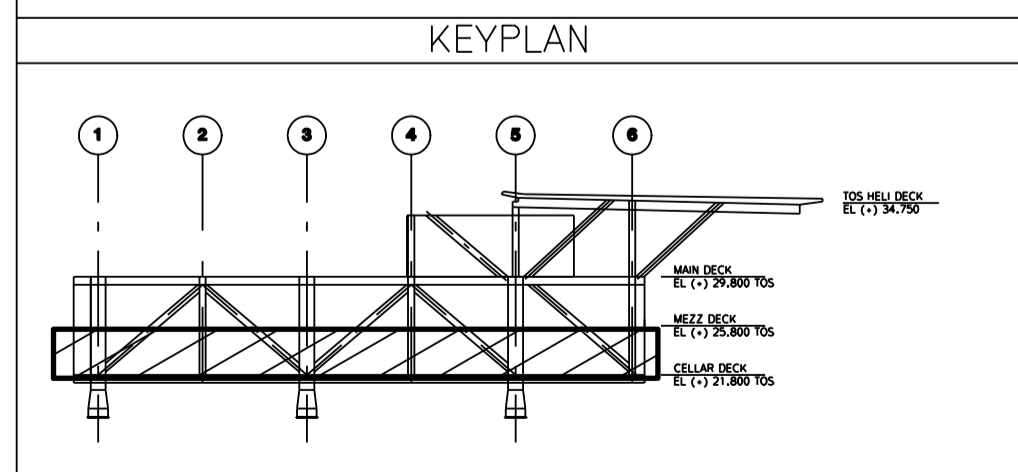
NOTES
1. FINAL SIZING BUNDED AREA TO BE DETERMINED DURING DETAIL DESIGN.

EQUIPMENT LIST	
EQUIPMENT NUMBER	DESCRIPTION
C-1400	GLYCOL CONTACTOR
P-2710A	CONDENSATE INJECTION PUMPS
P-2710B	CONDENSATE INJECTION PUMPS
P-6010A	PRODUCTION SKIMMER PUMP
P-6010B	PRODUCTION SKIMMER PUMP
P-6360A	DECK SKIMMER PUMP
P-6360B	DECK SKIMMER PUMP
P-9000A	ELECTRICAL DRIVEN FIREWATER PUMP
P-9000B	ELECTRICAL DRIVEN FIREWATER PUMP
P-9310	SWEET WATER JOCKEY PUMP
P-9320	SWEET WATER TEST PUMP
P-9510A	SEAWATER LIFT PUMP
P-9510B	SEAWATER LIFT PUMP
T-6000	PRODUCTION SKIMMER TANK (DECK INTEGRATED)
T-6350	DECK SKIMMER TANK INTEGRATED
T-9300	SWEET WATER STORAGE TANK
V-1200	PRODUCTION SEPARATOR
V-1210	PRODUCTION SEPARATOR
V-1220	PRODUCTION SEPARATOR (FUTURE)
V-1300	INLET SCRUBBER
V-1700	SLUG CATCHER (FUTURE)
V-1800	SUCTION SCRUBBER (FUTURE)
V-1850	SUCTION SCRUBBER (FUTURE)
V-2500	CONDENSATE FLASH VESSEL
V-3800	VENT KNOCK OUT DRUM
W-1000	WELLHEAD CONTROL PANEL
Z-1500	FISCAL GAS METERING
Z-1510	FISCAL GAS METERING
Z-4500	GLYCOL REGENERATION PACKAGE
Z-9200	FOAM TANK
Z-9550	POTABLE WATER PACKAGE
Z-9900	LIFEBOAT 24P DAVIT LAUNCHED

ROOM MATRIX	
ROOM	DESCRIPTION
201	MECHANICAL STORAGE
	BEDROOM 1
	BEDROOM 2
	BEDROOM 3
	BEDROOM 4
	CONTROL & RADIO ROOM
	MUSTER AREA

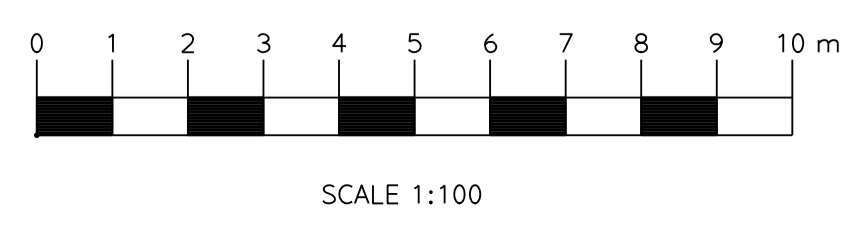
REFERENCE DRAWINGS	
DWG. NO.	DRAWING TITLE
N05A-4-51-0-42501-01	LOOKING WEST
N05A-4-51-0-42502-02	LOOKING SOUTH
N05A-4-51-0-42502-01	MAIN DECK & HELI DECK
N05A-4-51-0-42503-01	HELI DECK
N05A-4-51-0-42504-01	MAIN DECK
N05A-4-51-0-42505-01	MEZZANINE DECK
N05A-4-51-0-42522-01	GENERAL ARRANGEMENT

HOLDS



ISSUE REV	DD	MM	YYYY	REVISION DESCRIPTION	DRAWN BY	CHECKED BY	APPROVED BY
06	19	12	2019	FINAL FOR FEED	RWA	ABI	SRO
05	09	12	2019	FINAL FOR FEED	RWA	ABI	SRO
04	16	10	2019	FINAL FOR FEED	RWA	ABI	MST
03	07	10	2019	FINAL CONCEPT	RWA	ABI	MST

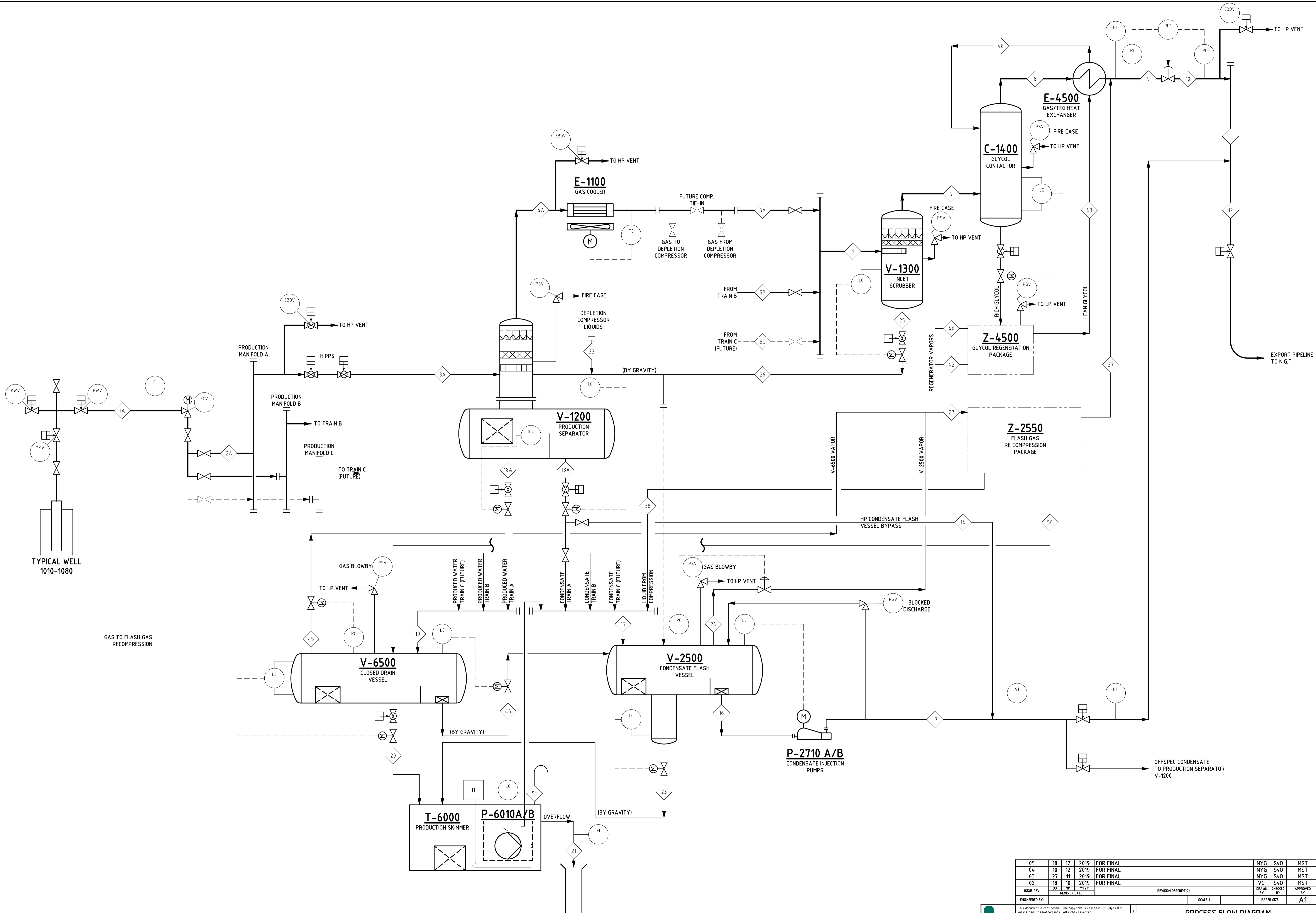
CELLAR DECK
T.O.S. EL. +21800



ONE-Dyas B.V. Amsterdam	ASSETCODE N05A	DOC.CODE 4	DOC.TYPE CODE 51	PREFIX 0	DOCUMENT NUMBER 42506	SHEET NR 01	REVISION 06
----------------------------	-------------------	---------------	---------------------	-------------	--------------------------	----------------	----------------

3 Proces Flow Diagrams

Process Flow Diagram - Main Process



ISSUE REV	DC	PH	YYYY	REVISION DATE	REVISION DESCRIPTION	DRAWN BY	CHECKED BY	APPROVED BY
05	18	12	2019	FOR FINAL		NYG	SvO	MST
04	10	12	2019	FOR FINAL		NYG	SvO	MST
03	27	11	2019	FOR FINAL		NYG	SvO	MST
02	18	10	2019	FOR FINAL		VCI	SvO	MST

ENGINEERED BY	SCALE 1	PAPER SIZE
		A1



ASSET CODE	DISC CODE	DOC TYPE CODE	PREFIX	DOCUMENT NUMBER	SHEET NO	REVISION
N05A	2	53	0	23508	01	05

**PROCESS FLOW DIAGRAM
MAIN PROCESS**